



SERVICE PARTS LIST

BUL. 54-08-9011

1/4" ELECTRIC DRILL

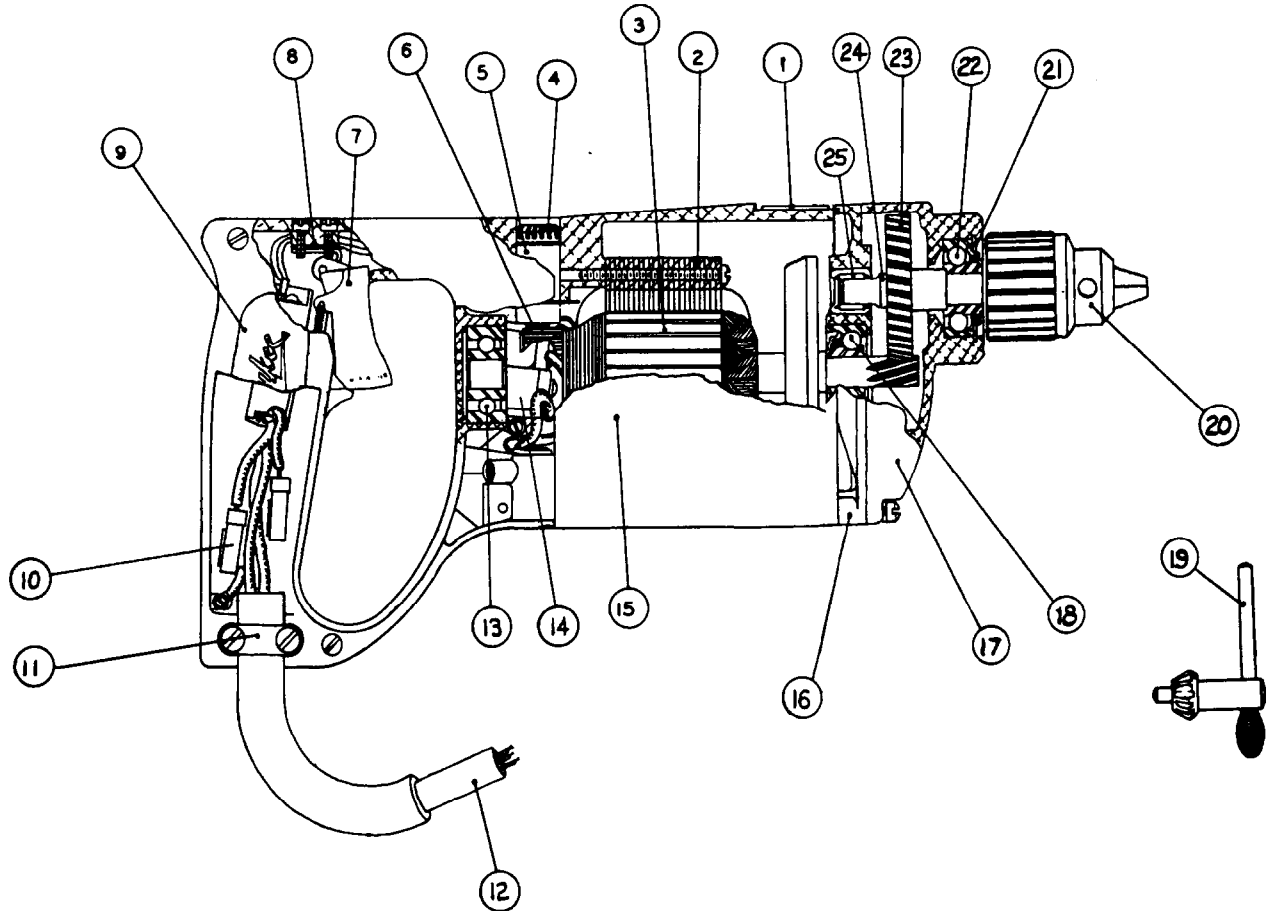
REVISED BUL 6148-2 DATE FEB. '68

MODEL NO. S-114G

Starting Serial No. 148-2500

WIRING INSTR.

Both Model and Serial No. must be furnished to obtain correct parts.



ILLUSTRATED PARTS

FIG.	PART NO.	DESCRIPTION OF PART	FIG.	PART NO.	DESCRIPTION OF PART
1	12-98-0800	Name Plate	13	02-04-0970	Ball Bearing
2	18-42-1050	Field Assembly	14	22-33-0150	Capacitors
3	16-42-1170	Armature Assembly	15	28-50-4484	Motor Housing
4	23-44-0060	Carbon Brush Ret. Screw	(2) 16	28-28-0821	Diaphragm
5	22-22-0080	Brush Holder Assembly	(2) 17	28-14-0841	Gear Case
6	22-18-0100	Carbon Brush Assemblies	(2) 18	02-04-0970	Ball Bearing
7	23-66-0230	Switch Assembly	19	48-66-3200	Chuck Key
8	45-36-0110	Switch Spacer	20	48-66-0260	Chuck, 3-jaw (3/8-24 Thread)
9	28-20-3141	Handle Cover	21	34-80-2200	Retaining Ring
10	22-33-0150	Capacitors	(2) 22	02-04-1060	Ball Bearing
11	28-17-0400	Cord Clamp Strap	23	32-75-1741	Spindle Gear
12	22-64-0200	Cord Set	24	38-50-3151	Spindle
			25	02-50-2110	Roller Bearing

MISCELLANEOUS PARTS NOT SHOWN

SIZE OR PART NO.	DESCRIPTION OF PART	SIZE OR PART NO.	DESCRIPTION OF PART
06-81-8625 6-32x1/4 Rd. Hd.	(Brass) Ground Screw	06-81-5800 6-32x5/16 Fil. Hd.	Sems Switch Mtg. Screws (2)
06-81-6300 8-32x7/8 Fil. Hd. Sems	Gear Case Screw	23-86-0110	Brush Holder Insul. Washer (2)
06-81-6500 8-32x1-3/8 Fil.Hd.Sems	Gear Case Screw	23-16-0050	Switch Insulator
06-42-080 0 #207	Woodruff Key	06-81-6600 8-32x1 1/4 Fil.Hd.	Field Screws (Sems) (2)
06-81-6100 8-32x7/16 Fil.H.D.Sems	Cord Clamp Screws (2)	06-83-2650 1/4-20x3/8 Hd*Less	Brush Holder Set Screws (2)
06-81-8400 4-40x1/4 Rd. Hd.	Name Plate Screws (2)	06-81-3700 8-32x7/8 oval Hd.	Handle Cover Screws (4)